

DATARAVE.NET

X11LOGI.WAX Script Documentation

Limited Release

April, 2002

Document Version: 0.98

Copyright © 2001-2002 John Williams. All Rights Reserved

Information contained on the following pages contain third-party trademarks and copyrighted information belonging to the author.

Table of Contents

COPYRIGHT INFORMATION3

SOFTWARE REQUIREMENTS3

HARDWARE REQUIREMENTS4

INSTALL X11LOGI.WAX.....4

ADDING LOGON INFO TO CONNECTION DIRECTORY ENTRIES4

RESULTS7

Copyright information

NORTEL NETWORKS, MERIDIAN, MERIDIAN 1 are trademarks of Nortel Networks.

PROCOMM PLUS is a trademark of Symantec Corporation.

INTEL is a trademark of Intel Corporation

MICROSOFT, MS-DOS, WINDOWS 95, WINDOWS 98, WINDOWS 2000 and WINDOWS NT are trademarks of Microsoft Corporation.

Presentation format and remaining content Copyright © 2001-2002 John Williams. All Rights Reserved.

The display or use of any trade names or trademarks within this document does not imply or constitute an endorsement by any third parties of this document or the information contained herein. All trademarks referred in this document are the property of their respective owners. No infringement is intended by the use of such trademarks. The appearance or absence of products, services, companies, or organizations does not imply any endorsement or non-endorsement thereof.

This document and translations of it may be copied and furnished to others, and derivative works that comment on or otherwise explain it or assist in its implementation may be prepared, copied, published and distributed, in whole or in part, without restriction of any kind, provided that the copyright notice and these paragraphs are included on all such copies and derivative works. However, this document itself may not be modified in any way, such as by removing the copyright notice or references to John Williams or DATARAVE.NET.

The limited permissions granted above are perpetual and will not be revoked by John Williams or his successors or assigns.

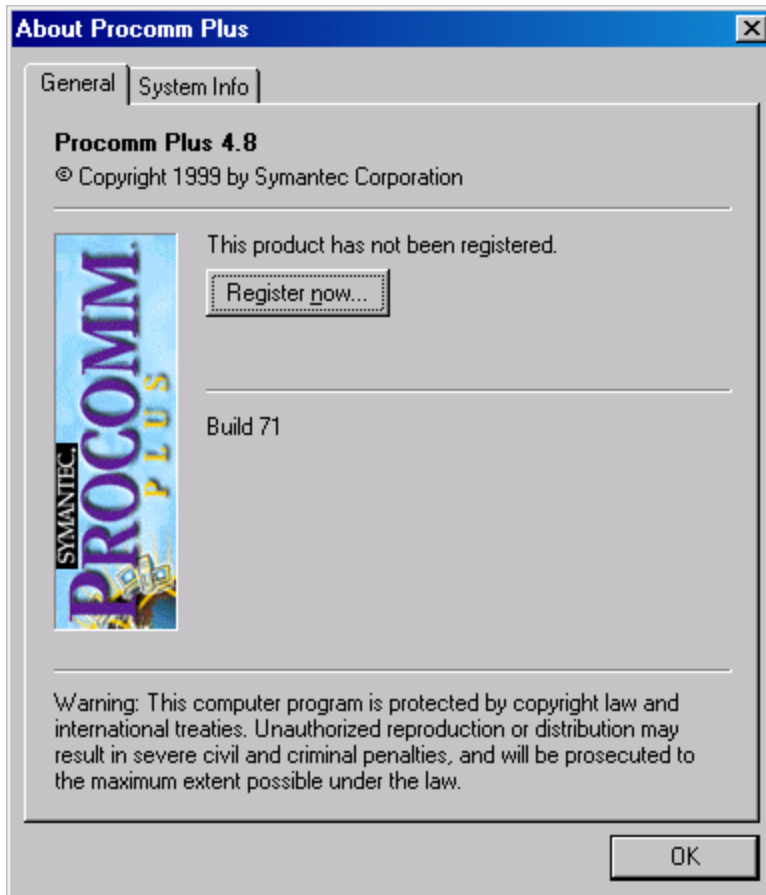
This document and the information contained herein is provided on an "AS IS" basis and JOHN WILLIAMS DISCLAIMS ALL WARRANTIES, EXPRESS OR IMPLIED, INCLUDING BUT NOT LIMITED TO ANY WARRANTY THAT THE USE OF THE INFORMATION HEREIN WILL NOT RESULT IN ANY DAMAGE TO SYSTEMS OR SOFTWARE, INFRINGE ANY RIGHTS OR ANY IMPLIED WARRANTIES OF MERCHANTABILITY OR FITNESS FOR A PARTICULAR PURPOSE. THE USER AGREES TO HOLD HARMLESS AND INDEMNIFY JOHN WILLIAMS FOR THE USE OR MISUSE OF CONTAINED INFORMATION OR REFERENCED SOFTWARE.

Information contained herein is subject to change without notice. John Williams reserves the right to make changes in design or concept as industry progress may warrant.

meridian@datarave.net

Software Requirements

Windows 95/98/2000/NT
Procomm Plus 4.8



Hardware Requirements

Modem

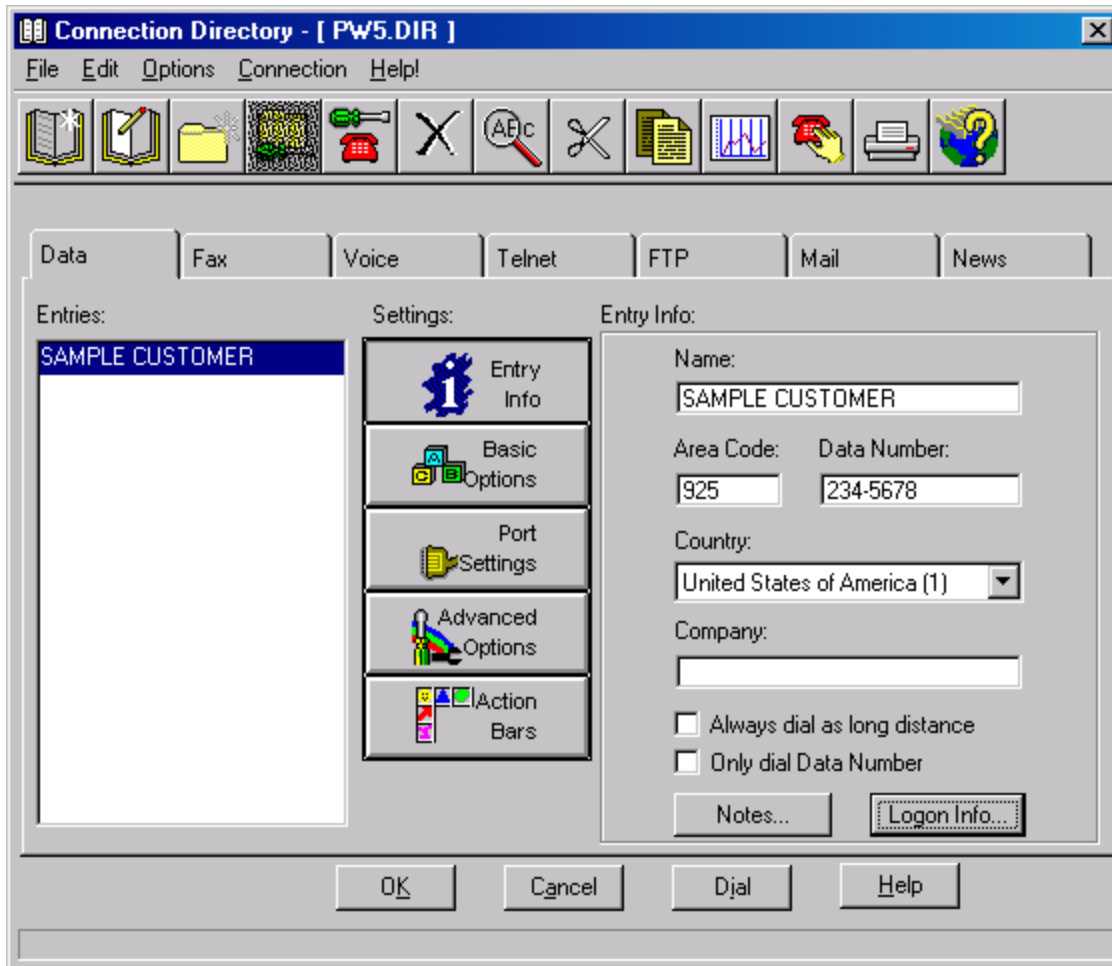
Install X11LOGI.WAX

Copy the X11LOGI.WAX script to your \Aspect\ subdirectory.

Example: C:\Program Files\Procomm Plus\Aspect\

Adding Logon Info to connection directory entries

Step 1: Open the Connection Directory and select the entry desired by left clicking on the name in the **Entries** frame. Select the **Entry Info** settings button.



Step 2: Select **Logon Info...** and the following window will appear.

Step 3: Enter the following information

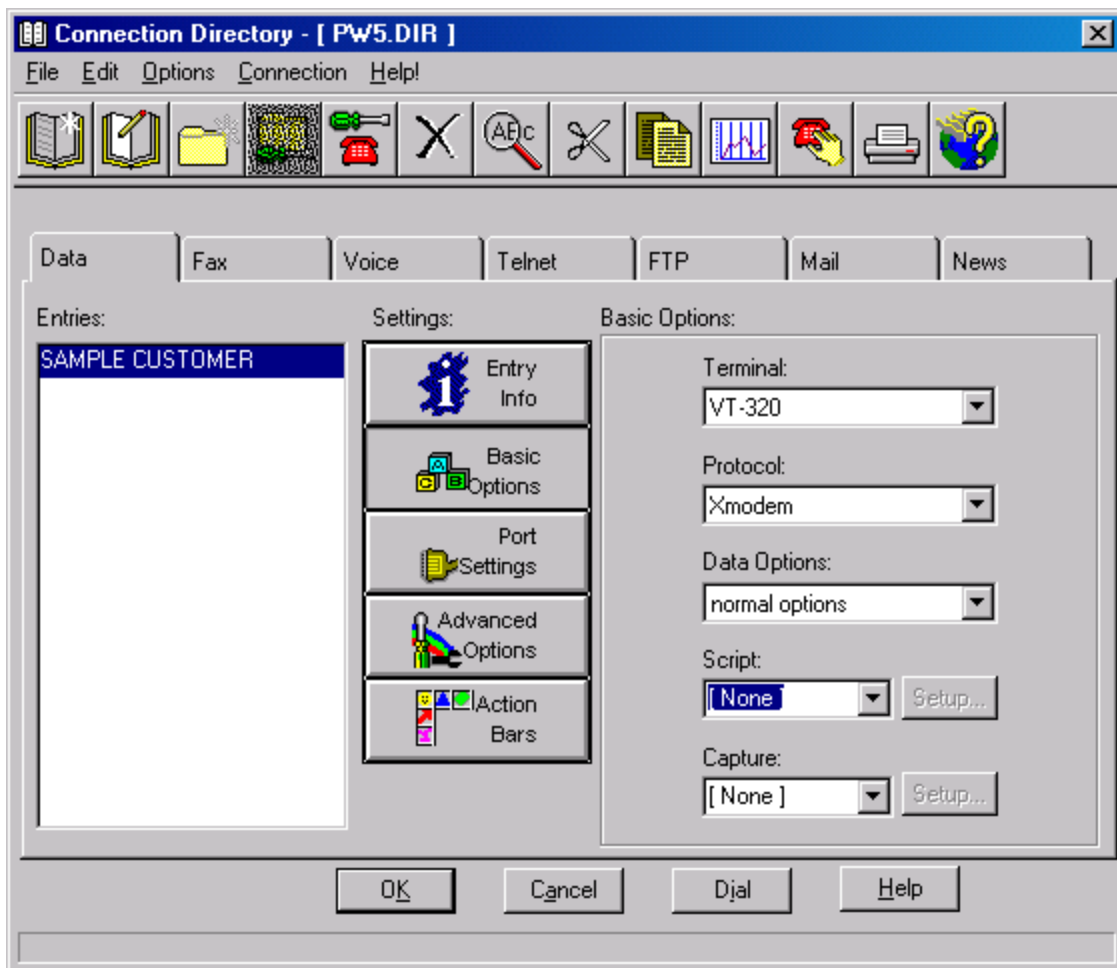
User ID: the LAPW name (if applicable) for the Meridian 1 PBX

Password: the password for the Meridian 1 PBX (Note, Passwords much match the LAPW user name entered in the **User ID** field, if applicable.)

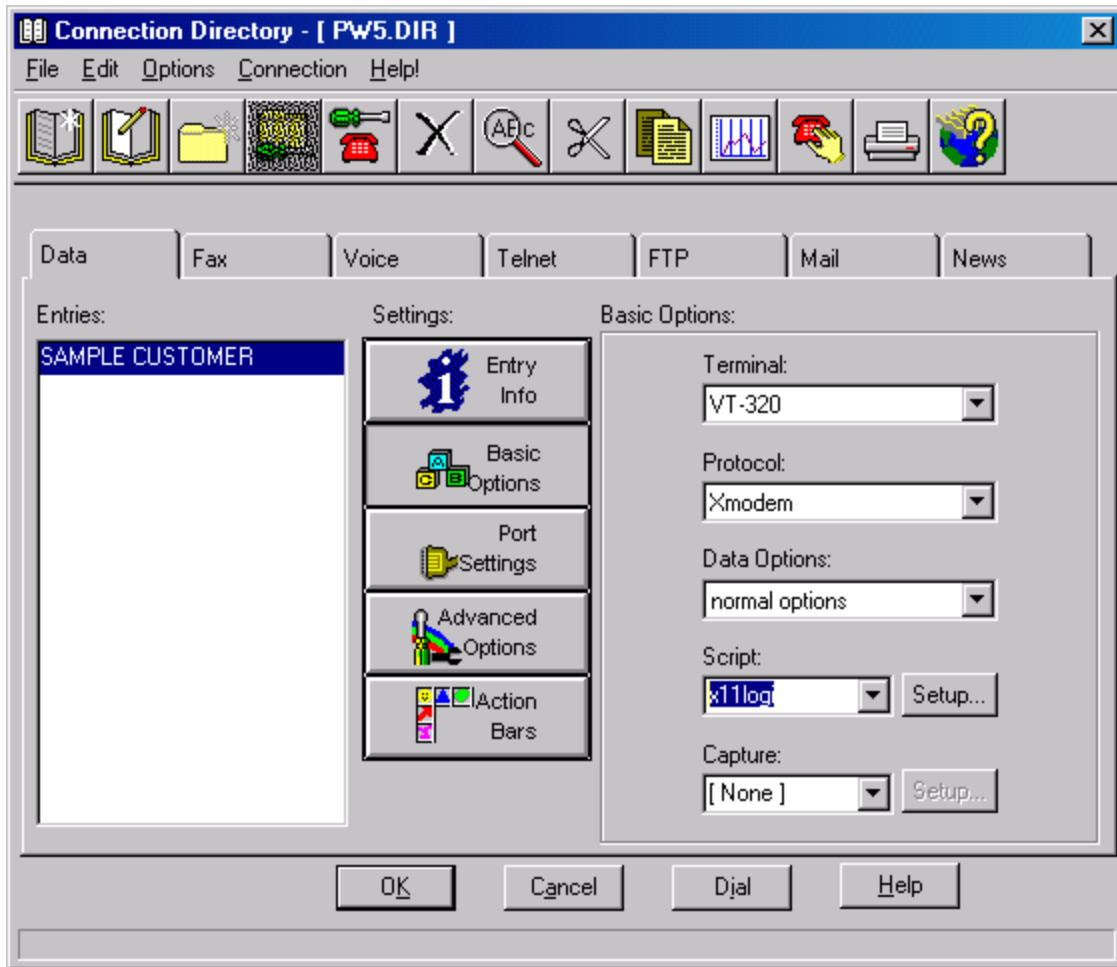
Confirm Password: the password field will display all stars (i.e., "*****"), please reenter the password here.

Miscellaneous: enter the SEB password for this entry.

Step 4: Select the **Basic Options** settings button.



Step 5: Select the script **x11logi**



Step 6: Select **Dial**.

Results

1. Procomm Plus will dial the phone number of the entry.
2. As soon as the modem connects, the Script becomes active.
3. The script outputs the **Miscellaneous** field of the **Logon Info...** if available else it skips this step.
4. The script responds "7" and "1" to any SEB prompts else it skips this step.
5. The script transmits four asterisks and then two carriage returns.
6. The script attempts to login, using the **User ID** as the LAPW name if available else it skips this step
7. The script aborts if it receives any OVL messages
8. The script sends the password entered into the **Password** field.
9. The script quits.

Other Meridian Resources

Visit <http://www.datarave.net/meridian/>